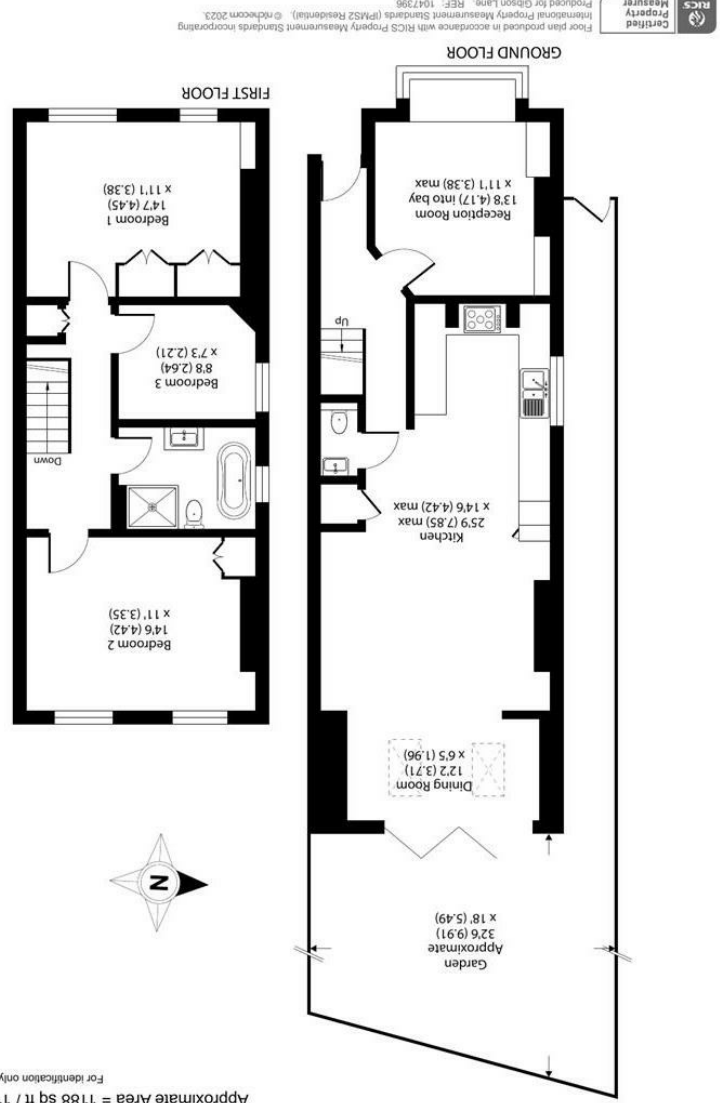
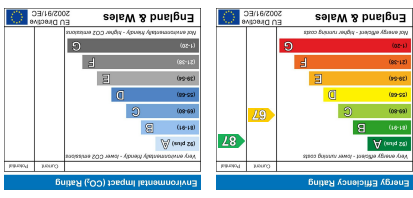


**Important Information**  
 All appliances listed in these details are only 'as seen' and have not been tested by Gibson Lane, nor have we sought certification of warranty or service, unless otherwise stated. Measurements, areas and distances are approximate. Floor plans and photographs are for guidance purposes only and must not be relied upon for any purpose. These details are offered on the understanding that all negotiations are made through this company. Neither these particulars, nor verbal representations, form part of any offer or contract, and their accuracy cannot be guaranteed.



Approximate Area = 1188 sq ft / 110.3 sq m  
 For identification only - Not to scale

34 Richmond Road  
 Kingston upon Thames  
 Surrey  
 KT2 5ED  
 www.gibsonlane.co.uk  
 Tel: 020 8546 5444



Chesham Road  
 Kingston Upon Thames KT1 3AG



### Guide Price £925,000

- Edwardian Halls Adjoining Semi-Detached
- Three Bedrooms
- Impressive Open Plan Kitchen/Living/Reception Room
- Scope to Extend into the Loft (STNC)
- Finished to a Very High Specification
- Bursting with Character
- Fantastic Location
- Close to Norbiton Train Station
- EPC Rating - D
- Council Tax Banding - TBC

\* Tenure: Freehold

\* Local Authority: Kingston Upon Thames

### Description

An elegant Edwardian halls adjoining semi-detached family home with generous accommodation approaching 1200sqft arranged over two floors. This charming home boasts plenty of character with many period features and high ceilings throughout. The ground floor provides a lovely front reception room with log burning fireplace and large bay window, a downstairs WC and the real hub of the house; a magnificent open plan kitchen/living/dining room spanning over 30ft which is perfect for family life and entertaining guests. The first floor offers two large double bedrooms complete with built in wardrobes, a modern family bathroom with separate bath and shower plus an additional bedroom. There is also scope to extend into the loft (subject to necessary consent). Externally there is a lovely front garden, side access and a private rear garden. This property has been finished to a very high specification and internal viewings are highly recommended!

### Situation

Chesham Road is a sought after residential street conveniently located moments from Norbiton Village with its select range of shops and rail station giving direct access into Waterloo. The A3 which serves both London and the M25 is easily accessible by car. The standard of schooling in the immediate area is excellent within both the private and state sector.

